The background of the slide is a photograph of a bayou. The water is calm and reflects the surrounding trees and sky. The trees are mostly bare, suggesting a late autumn or winter setting. The banks are lined with more trees and some fallen branches.

**DRAFT ATTOYAC BAYOU WATERSHED
PROTECTION PLAN UPDATES OVERVIEW**
April 3, 2014

Attoyac Bayou WPP – Draft 1

- 1st draft was discussed on February 20th
- Released for an initial 30 day review
- One set of comments received
- Revisions made to the plan to address those comments
 - Comments focused on adding more detailed descriptions of certain sections
 - We'll go over those in a few minutes

Attoyac Bayou WPP – Draft 2

- Additions made to the 1st draft of the WPP to further describe several major plan components
- More reader friendly with references now included
- Explanation of the expected management measure bacteria load reductions included
- More description added to a number of items
 - Defined a few terms
 - Clarified the explanation
 - Included additional detail

WPP Front Matter Added

- Dedication to Ralph Schwausch
 - Work in progress
 - Trying to get several good photos
 - Let us know if you have anything to add
- Table of Contents, Lists of Figures, Table and Acronyms
- Executive Summary Added
 - Generally describes the plan in only 4 pages!!



Chapter 1 - Watershed Management

Chapter 2 – Regional History

- Chapter 1
 - Not much change
 - Only minor edits and reference to Appendix A added
- Chapter 2
 - Same story

Chapter 3 – Watershed Characteristics

- Added some discussion on groundwater resources
 - Depth to aquifers
 - Thickness of aquifers
 - Groundwater usage info

- Added more info on Lake Naconiche
 - Storage capacity
 - Depth of reservoir

Chapter 4 – Current Watershed Conditions

Chapter 5 – Water Quality Assessments

- Actually switched order of Ch. 4 & 5
 - Current Watershed Conditions now before Water Quality Assessments

- Ch. 4
 - Just minor editing fixes

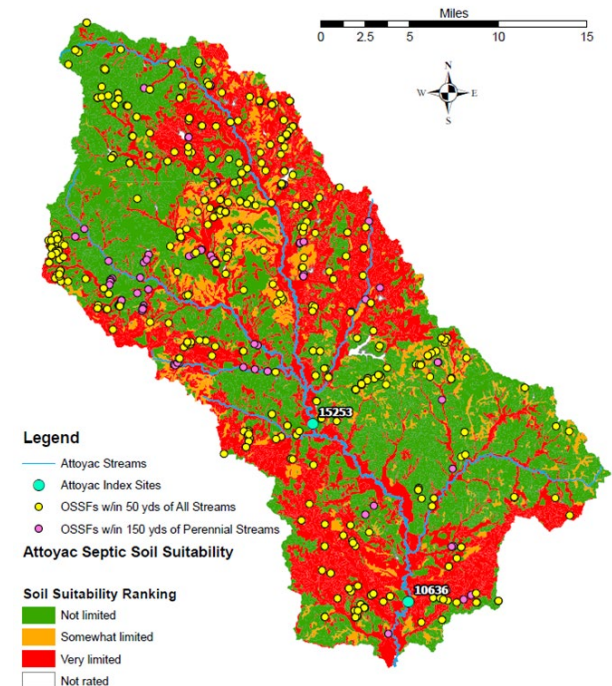
- Ch. 5
 - Updated Neches River basin map
 - Better defined stream flow types
 - Added discussion on pH, total dissolved solids, total suspended solids, and water temperature
 - Added paragraph on general water quality in the Attoyac

Chapter 6 – Potential Sources of Pollution

- Updated OSSF map showing soil adsorption properties and OSSFs within close proximity to streams
 - Added discussion on these changes
 - Further discussed the importance of OSSF distance to streams

- Updated Poultry #s discussion
 - Replaced 2007 county data with 2011 TSSWCB WQMP #s
 - Further discussed litter management through WQMPs

- Added WWTF permit violation information



Chapter 7 – Watershed Pollutant Source Assessment

- Updated Table 7.1 (p. 47) to include water temperature and total suspended solids data
- Added discussion on data collected
 - Nitrate-nitrite N
 - Orthophosphate
 - Total phosphorus
 - Dissolved Oxygen
 - Total suspended solids
 - Water temperature
 - Specific conductance
 - pH
- Added paragraph about reasoning behind pollutant categories managed and why

Chapter 8 – Watershed Goals

- Only minor editing changes

Chapter 9 – Watershed Management Strategies

- Further discussion on reasoning behind recommended management and decision not to recommend management for some sources
- Discussed prioritizing management and the BMP survey results (survey that y'all did regarding feasibility and likelihood of implementation)
 - Added Table 9.1 that summarized results

Chapter 9 – Watershed Management Strategies

- Discussed prioritizing recommended management for each source and reasoning behind it
 - Added Figures 9.1 and 9.2 to support discussion
- Photos and other minor edits



Chapter 10 – Financial Assistance

- Updated chapter to remove programs no longer available/applicable and updated text to better describe others
 - Federal Programs
 - New Farm Bill did away/combined a number of programs
 - State Programs
 - Clean Rivers Program – revised language to better describe
 - Clean Water State Revolving Fund – added detail
 - Supplemental Environmental Program
 - Discussed options for use and potential project
 - Added discussion on In-Kind Services

Chapter 11 – Education and Outreach

- Summarized results of previously delivered Texas Watershed Steward Program
- Added discussion about stakeholder involvement in WPP development; added Table 11.1 listing the agencies, groups, interests represented
- Discussed the role of field days in future WPP implementation

Chapter 12 – Measuring Success

- Added section about a special monitoring study ANRA will be doing in association with their OSSF repair/replacement project
- Also added info about how future water quality data will be utilized to assess water quality and WPP implementation effectiveness in relation to water quality goals

Chapter 13 – Plan Implementation References

- Ch. 13
 - Minor edits made
- References
 - Now included
 - Added a few additional sources

Appendices Added

- Appendix A – defines the EPA 9 Key Elements for a WPP and references where they are addressed in the plan
- Appendix B – describes the different land use and land cover definitions discussed in Ch. 3
- Appendix C – describes what information a box plot tells you
- Appendix D – describes how load reduction estimates are calculated

Next Steps

- Please take a copy of the WPP with you or download at: www.attoyac.tamu.edu/
- Review the plan....timeline is up to you
- When ready, can finalize the first ‘Partnership Approved’ plan and begin Agency Review process

Lucas Gregory
Texas Water Resources Institute
2260 TAMU
College Station, TX 77843-2260
lfgregory@ag.tamu.edu

Anthony Castilaw
Castilaw Environmental Services, LLC
510 E. Pilar St.
Nacogdoches, TX 75961
acastilaw@castilawenvironmental.com

Attoyac Bayou Watershed Protection Plan Development

About Meetings Reports & Publications Maps & Data Contacts Resources

The Attoyac Bayou is a sub-watershed within the Upper Neches River Watershed extending approximately 82 miles through Rusk, Nacogdoches, San Augustine, and Shelby Counties before emptying into Sam Rayburn Reservoir. Several rural communities can be found throughout the area, with the majority of the lands in the watershed being used for cattle and poultry operations, forestry or recreational/wildlife uses.

The Attoyac Bayou is one of many rural watersheds listed as an impaired water body on the Texas Water Quality Inventory and 303(D) List due to high levels of *E. coli* bacteria. Three monitoring stations managed by the Angelina-Neches River Authority (ANRA), the US Geological Survey (USGS), and Texas Commission on Environmental Quality (TCEQ) have been providing water quality data on the bayou for a number of years. *E. coli* data were first collected beginning in 2000 and has consistently resulted in elevated *E. coli* levels that exceed

[Download](#) the draft Watershed Protection Plan

In the News

[Forest Pest Seminar set Feb. 14 in Lufkin](#)

[Meeting in Nacogdoches on Feb. 20 will focus on improving Attoyac Bayou water quality](#) AgriLife Today, February 3, 2014

[Attoyac Bayou bacterial tracking subject of May 16 Nacogdoches meeting](#) AgriLife Today, April 29,

Any Questions?



Lucas Gregory
Texas Water Resources Institute
979-845-7869
lfgregory@ag.tamu.edu